

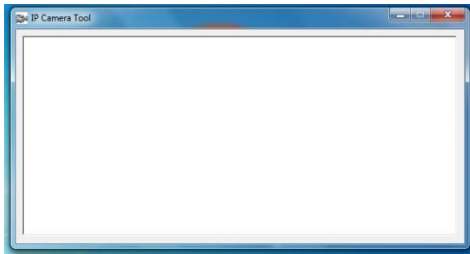
Installation Guide for LINKSYS Routers (Guide using WRT310N)

A quick summary on how we will start our configuration process.

1. Installation of IP Camera Tool into your PC
2. Setup the camera physically and linking it to the router via WIRED connection
3. Setup the wireless information on the camera to connect to the Linksys router for WIRELESS connection
4. Changing IP Camera's default Port
5. Configuring the router (port-forwarding) on Linksys
6. Sign Up & Setup DYNDNS account
7. Setup the DYNDNS account on the IP Camera
8. Change the Admin Login Password

Step 1 – Installing of IP Camera Tool (For auto camera detection)

1. To begin, insert the CD into your computer and install the IP Camera Tool application to your computer, when finished, launch the application. If no IP camera is detected, it will show a blank screen as follows

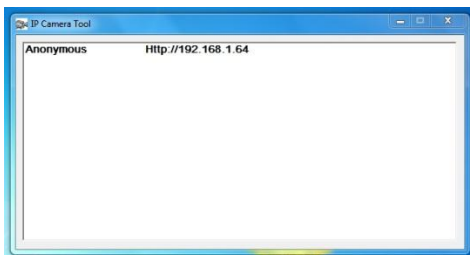


Step 2 – Physically connect IP Camera to Router via Wired LAN Cable

2. Open up the box and setup your camera with the antenna, power supply and Network cable connected to both router and camera (Wired Connection). This is required in order for the camera to be configured to the router.

Step 3 – Configuring Wireless on the IP Camera via wired connection (Initial Setup)

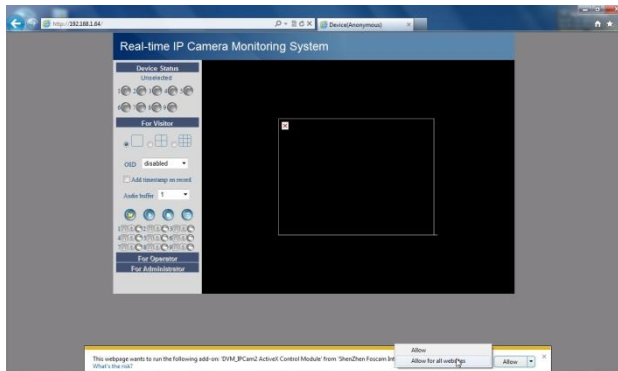
3. Upon connecting the camera to the router (wired), you will see the camera being detected on the application as follows (sample);



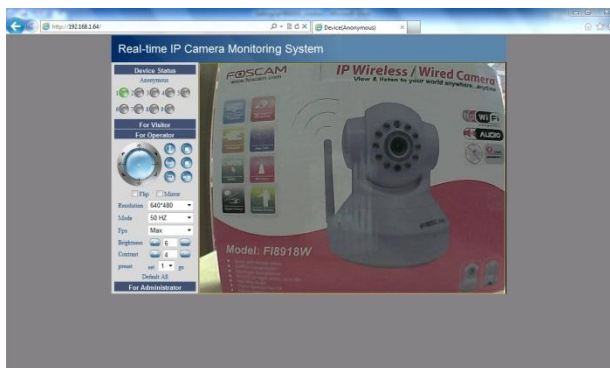
- Open up a web browser (IE), and key in the IP address (<http://192.168.1.64>), this will bring you to the web User Interface (UI) of your FI8918W. The default login is admin, no password. If you are using IE, click on the first Login. If you are using Firefox, Google Chrome, Opera or Safari, use the second Login Button in the web UI



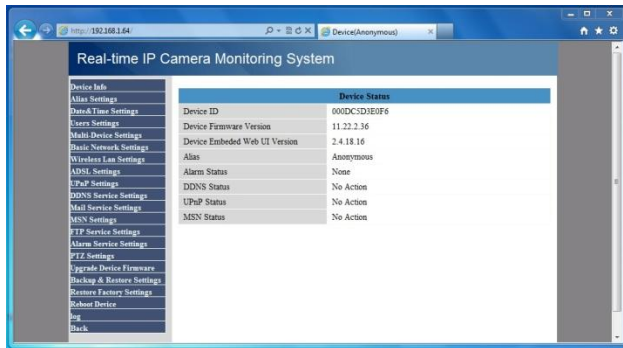
- First time accessing the page, the system will prompt you to install an ActiveX module as below (IE8 & IE9 screen sample) with the following message “This webpage wants to run the following add-on: ‘DVM_IPCam2 ActiveX Control Module’ from ‘ShenZhen Foscam Intelligent Technology Co., Ltd’”. Click on the arrow button and select **Allow for all websites**. The system will return you back to the login page.



- At the login page, login again with “admin” without password, you should see image now on your screen.



7. Select “For Administrator” on the left side of the menu to start the configuration process. In the Administrator Page, the default page will be as follows. You can see the status of the camera in overall view, like the firmware version, DDNS status, etc. Click on Wireless LAN Settings to start.

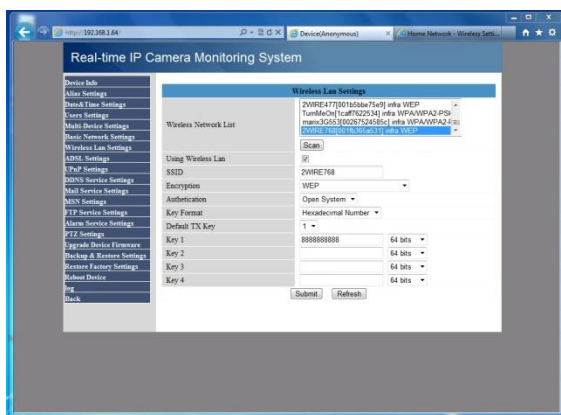


8. There are 2 ways to setup your wireless here, manual entry of your SSID and encryptions or use the Scan to locate your SSID and key in the encryption key. In our sample, our SSID is **2WIRE768**.



Question: I do not know what is my SSID! How do I go about finding it? Refer to page 11 of this guide!

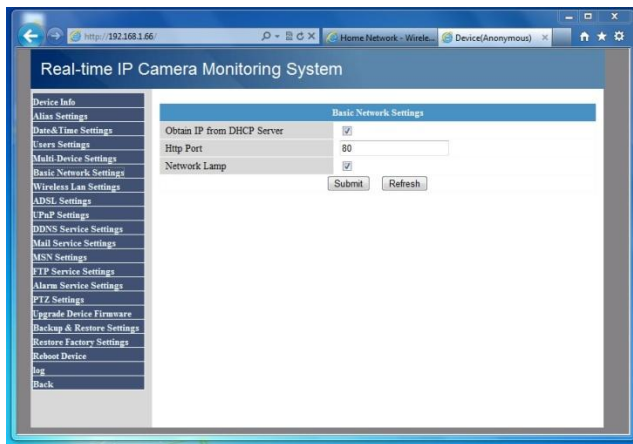
9. Using Scan button, we locate our SSID and do a LEFT mouse click to select the SSID. You may need to click 2-3 times for the list of available SSID to appear in the box. Key in your encryption key and press Submit. The system will go for a reboot cycle. When you see the camera rotates, you may remove the LAN cable (last 10 second of reboot cycle).



Take note that if your SSID is hidden, then you will never see the SSID in the box.

Step 4 – Changing the viewing port for the IP camera.

10. Upon rebooting, your camera **might** receive another IP address from the router, launch the IP Camera Tool if it has been closed. Key in the new IP address into your web browser. (example <http://192.168.1.66>) and login again. Access “For Administrator” and click on “Basic Network” on the left side menu. We will change the port for your IP Camera instead of using the default port 80 (blocked by most ISP). Under Http Port, change it to “8081” and press Submit, the camera will go into a reboot cycle again.

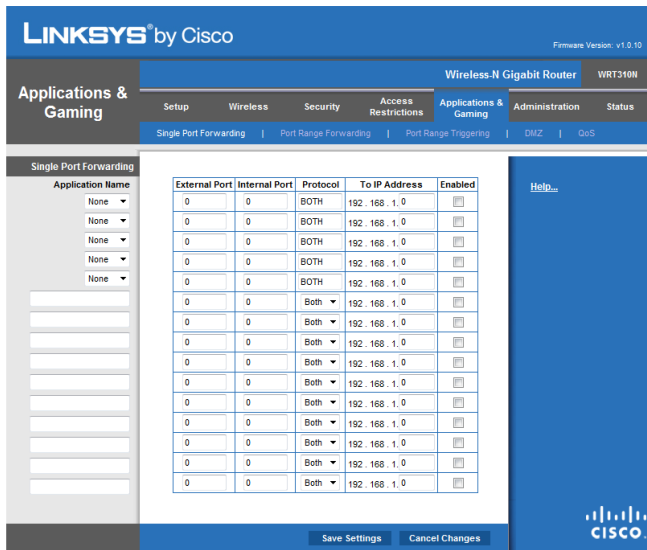


Tips: Use Ports 8082, 8083, 8084 subsequently for multiple cameras in the same network.

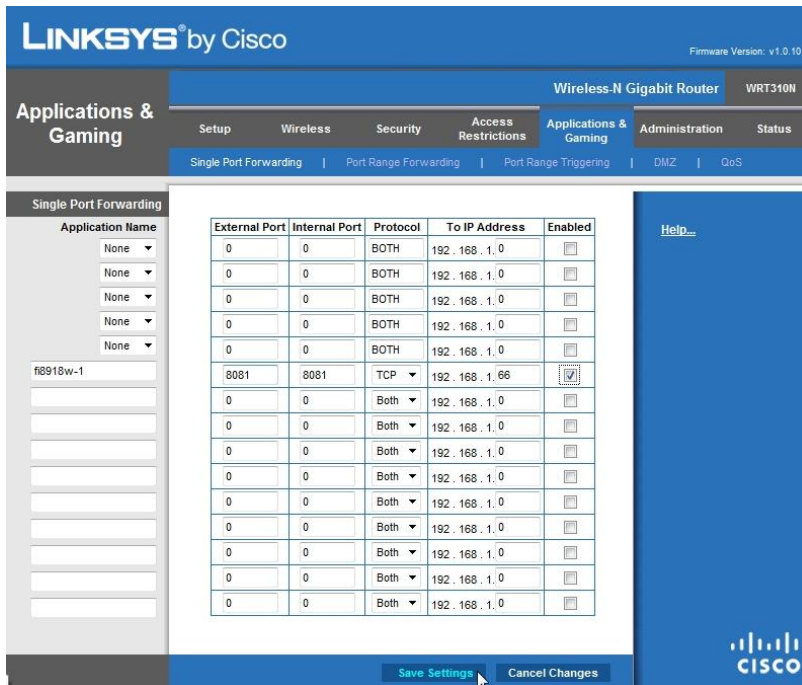
Tips: For Linksys routers, do setup a static IP address on your FI8918W instead. This can be achieve via the Basic Network Setting. More Info on Page 11.

Step 5 – Configuring the Firewall (Port Forwarding)

11. Now, we shall proceed to Configure the Linksys router for Port Forwarding. Key in the following URL into your web browser to go to the sitemap of the router. URL > <http://192.168.1.1> (default for Linksys), default login and both password is “admin”, click on **Applications and Gaming TAB** and you will see the **Single Port Forwarding Page** as follows.



- Key in the following details as per screen, using the first empty field for Application Name, key in “**fi8918w-1**”, fill in External Port & Internal Port with “**8081**”, select “**TCP**” for Protocol, point it to your camera’s IP address “**192.168.1.66**” in our example, and click on box **enabled**. Click on Save Settings when done!



Step 6 – DYNDNS Account Registering and Setup

- Click on **Sign In** at the top right side of the screen.



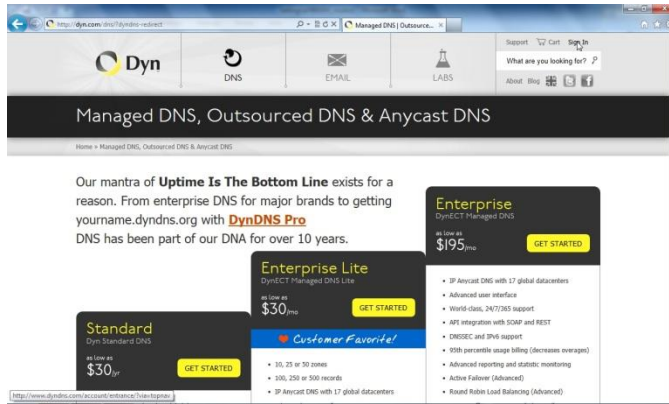
Premium IT Products Distribution Channel in Singapore

MARIX IT DISTRIBUTION (S) PTE LTD

20 Sin Ming Lane, #06-68, Midview City, Singapore 573968

Tel: +65 65623390, Fax: +65 65622711, Email: sales.enquiry@marix.com.sg

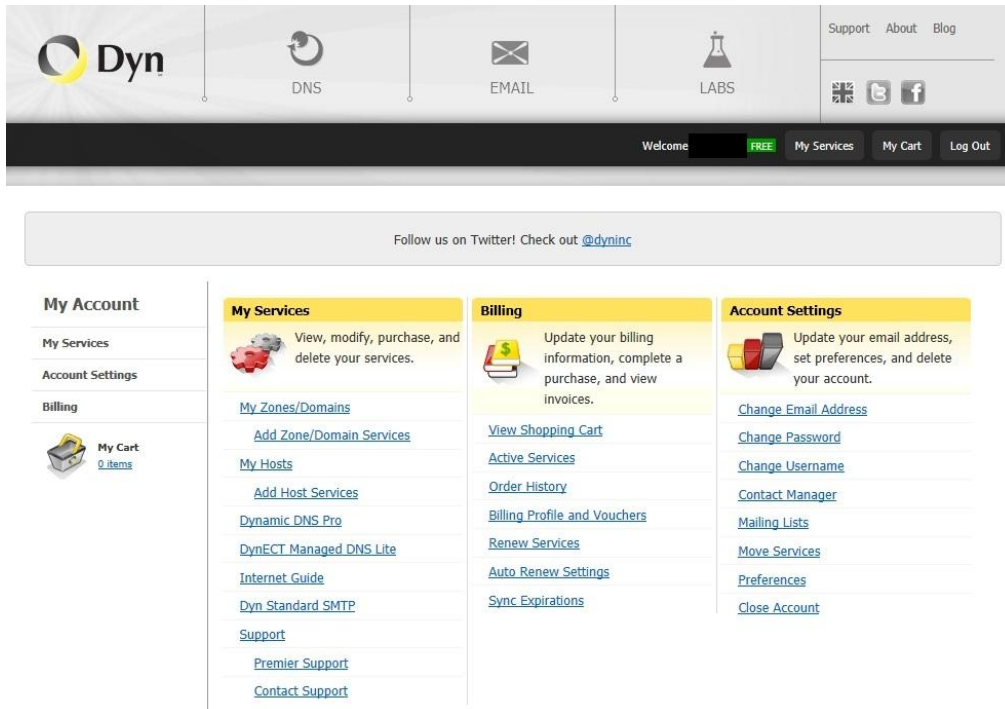
Website: <http://www.marix.com.sg>, GST Reg. 201025534R



- Fill in your information to sign up for a new DYNDNS account. Username can be anything for you to login to manage your hostname later. You will be accessing yourhostname.dyndns.org:8081 to view your camera later from external. Check your mailbox for verification mail and follow the steps to verify your new DYNDNS account and login.

Note: GMAIL may take up to half an hour to receive the verification email.

- Upon verification and login to your NEWLY created DYNDNS account, click on **My Hosts** to create a hostname for accessing your camera.



- Click on **Add New Host** to proceed.







Premium IT Products Distribution Channel in Singapore



MARIX IT DISTRIBUTION (S) PTE LTD

20 Sin Ming Lane, #06-68, Midview City, Singapore 573968

Tel: +65 65623390, Fax: +65 65622711, Email: sales.enquiry@marix.com.sg

Website: <http://www.marix.com.sg>, GST Reg. 201025534R


 DNS
  EMAIL
  LABS
 [Support](#) [About](#) [Blog](#)

Welcome **FREE** [My Account](#) [My Cart](#) [Log Out](#)

Register your own custom domain name [Start here](#)

My Account

My Services

- Dynamic DNS Pro
- Internet Guide
- Premier Support
- Domain names, DNS hosting, Dyn Email services
- Dynamic DNS Hosts
- DynECT Managed DNS Lite
- Dyn Standard SMTP

Host Services

[↑ My Services](#)

No Hostnames Registered: [Add New Hostname](#)

[» Host Update Logs](#)

[Add New Host](#)

Join the discussion in the [DynDNS Community](#) for tips and tricks, demos, suggestions, user help and much more.

17. Create a hostname unique and easy to remember for you. Click on “Your current location’s IP address is xxx.xxx.xxx.xxx” so that the DYNDNS can capture your External IP address of the router. Click on **Add to Cart** to continue.

The screenshot shows a web form for adding a new Dynamic DNS host. The form is divided into several sections:

- Hostname:** A text input field containing "my768cam" and a dropdown menu set to "dyndns.org".
- Wildcard:** A checkbox labeled "create '*.host.dyndns-yourdomain.com' alias (for example to use same settings for www.host.dyndns-yourdomain.com)".
- Service Type:** Three radio buttons: "Host with IP address" (selected), "WebHop Redirect (URL forwarding service)", and "Offline Hostname".
- IP Address:** A text input field with a redacted IP address. Below it, a link "Your current location's IP address is" points to another redacted IP address. Below that is a text input field for "IPv6 Address (optional)".
- TTL value:** A label "TTL value is 60 seconds." with a link "Edit TTL...".
- Mail Routing:** A checkbox labeled "I have mail server with another name and would like to add MX hostname...".

At the bottom right of the form is a blue button labeled "Add To Cart".

18. At the following screen, click on Proceed to checkout, and we are done! Log out from DYNDNS and return to your IP Camera web UI screen.

The screenshot shows the "Shopping Cart" page of the DynDNS Pro service. On the left is a "My Account" sidebar with links for "My Services", "Account Settings", "Billing", "Active Services", "Auto Renew Settings", "Order History", and "Billing Profile". The main content area is titled "Shopping Cart" and features a green notification: "Host my768cam.dyndns.org added to cart. Finish FREE checkout to activate." Below this is a blue button "Proceed to checkout".

The cart contains one item under the heading "Dynamic DNS Hosts":

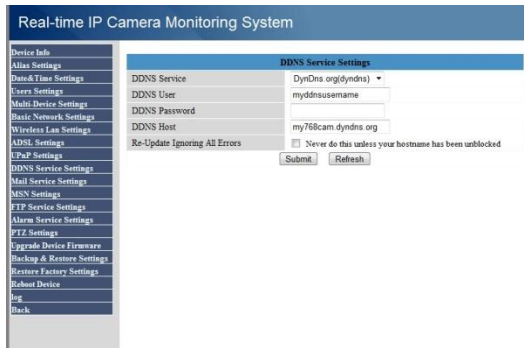
Dynamic DNS Hosts	Price
my768cam.dyndns.org	\$0.00

Below the table, it shows "Order Total: \$0.00" and another blue button "Proceed to checkout".

Step 7 – Setup DYNDNS account on your IP Camera

19. Access your IP Camera web UI using your web browser (<http://192.168.1.66:8081>). Tips: Remember we had changed the Port earlier on? So you need to add **:8081** to the URL. Login with admin, no password and access the **For Administrator Page**. Then select **DDNS Service Settings**.

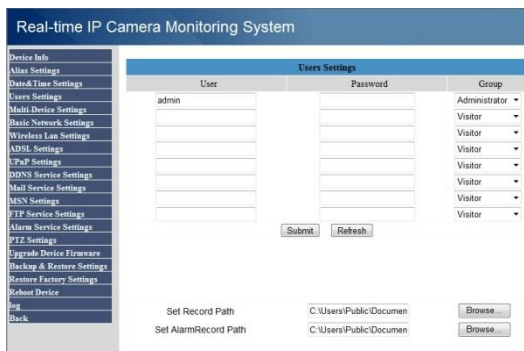
- At the following screen, select **DynDns.org (dyndns)** from the list, and key in your DDNS User name that you have created earlier on, and key in the password. Use your full hostname (example: my768cam.dyndns.org) in the DDNS Host and press Submit. The camera will go into a reboot cycle again.



- At this point in time, you should be able to view the camera from external, using your iphone or perhaps a computer with a USB dongle, try accessing your camera using your web browsers with the URL as follows <http://yourhostname.dyndns.org:8081> (example: <http://my768cam.dyndns.org:8081>). You should be able to view the camera's login page.

Step 8 – Changing your admin password

- Now, you can login back to your Camera's interface either thru the external URL or the internal IP address depending if you are on the LAN network or external network, login again as admin without password and enter the **For Administrator** Page.
- Select User Settings from the left side menu to see the following screen, key in a password for admin and click on submit. The camera will go into a reboot cycle. You are done now for basic viewing of your camera!

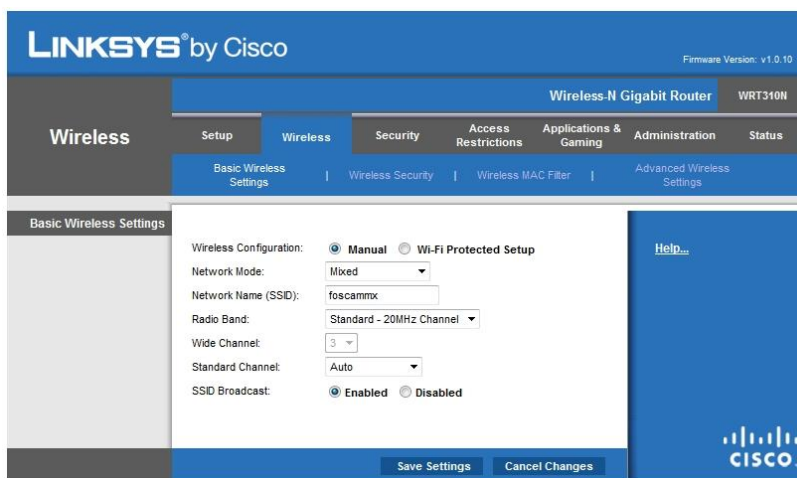


FAQ

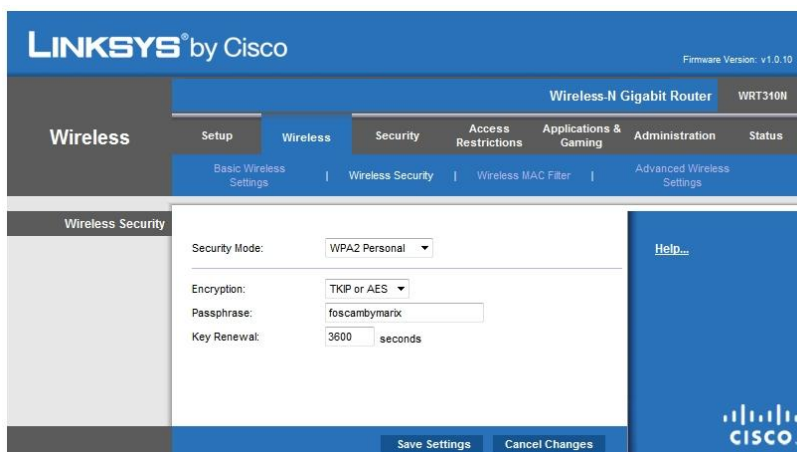
I do not know what is my SSID! How do I go about finding it?

By default, Linksys routers uses SSID “linksys” as default with no encryption at all. However, through our experience, many owners will actually change the SSID and encryption on their own as well as the IP address of the router, Some owners may even ask freelancers or friends to help set it up, it would be best to check with them on the SSID, router IP address if you are not familiar. Default IP address for Linksys routers is <http://192.168.1.254>

If you could login to the router’s page, you may go to the **Wireless** TAB as follows and locate the Network Name (SSID).



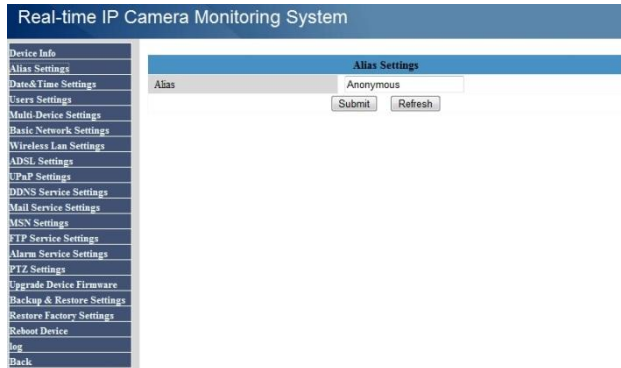
Then select the sub TAB **Wireless Security** to see the Security Mode (WEP, WPA, WPA2, etc), encryption method & WEP Key or passphrase, etc to fill in on your IP Camera’s page.



FAQ

How do I change the Anonymous name away for my camera?

It's very easy, go to **Alias Setting** which is under the **For Administrator** Page, give it a brand new name and press **Submit!**



Real-time IP Camera Monitoring System

Device Info
Alias Settings
Date&Time Settings
Users Settings
Multi-Device Settings
Basic Network Settings
Wireless Lan Settings
ADSL Settings
UPnP Settings
DDNS Service Settings
Mail Service Settings
MSN Settings
FTP Service Settings
Alarm Service Settings
PTZ Settings
Upgrade Device Firmware
Backup & Restore Settings
Restore Factory Settings
Reboot Device
log
Back

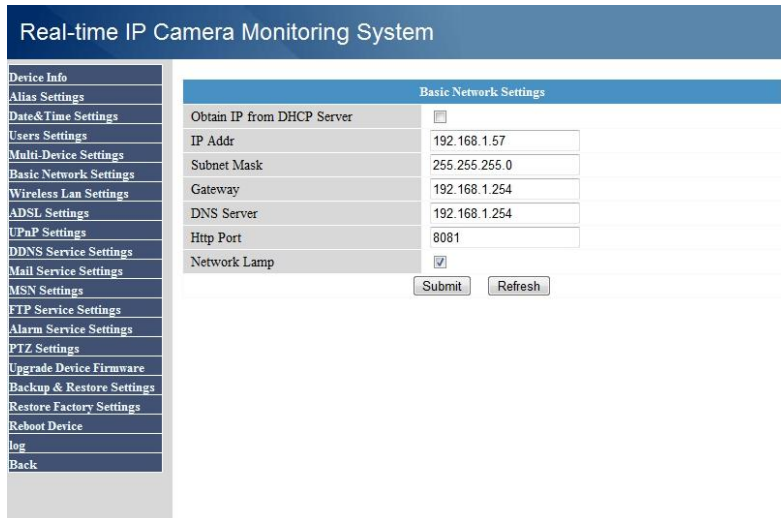
Alias Settings

Alias: Anonymous

Submit Refresh

How do I set a static IP on my IP camera?

Access the URL of the IP Camera and login as "admin", default no password. Go to **For Administrator** Page. Select **Basic Network Setting** on the left menu. Uncheck the **Obtain IP from DHCP Server** option and key in the configuration you desire in the fields below (sample), click on **Submit** and allow the camera to reboot.



Real-time IP Camera Monitoring System

Device Info
Alias Settings
Date&Time Settings
Users Settings
Multi-Device Settings
Basic Network Settings
Wireless Lan Settings
ADSL Settings
UPnP Settings
DDNS Service Settings
Mail Service Settings
MSN Settings
FTP Service Settings
Alarm Service Settings
PTZ Settings
Upgrade Device Firmware
Backup & Restore Settings
Restore Factory Settings
Reboot Device
log
Back

Basic Network Settings

Obtain IP from DHCP Server

IP Addr 192.168.1.57

Subnet Mask 255.255.255.0

Gateway 192.168.1.254

DNS Server 192.168.1.254

Http Port 8081

Network Lamp

Submit Refresh

Note: For other settings, you may refer to the guide in the CD which is very comprehensive for your reading.